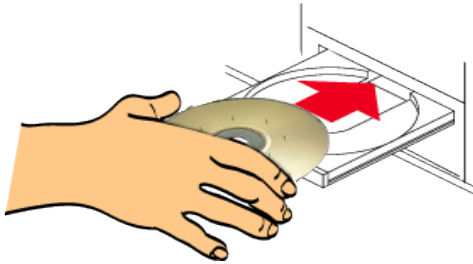



# MAG TOUCH

## Guard Monitoring Solutions

### Installing the MAG-TOUCH software



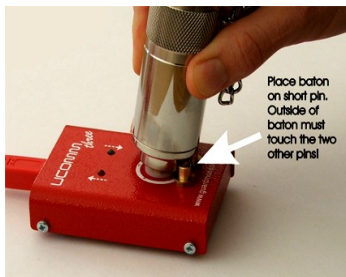
After inserting the MAG-TOUCH CD into the computer follow the prompts as the installation wizard installs the program. Please ensure that you read all the screens and choose the options you need.

After installation, the MAG-TOUCH program will automatically open, alternatively open by double clicking the  icon on the desktop.

The first time you open the Mag-touch program you, will be asked to name a site (eg: Mag-Touch Office)

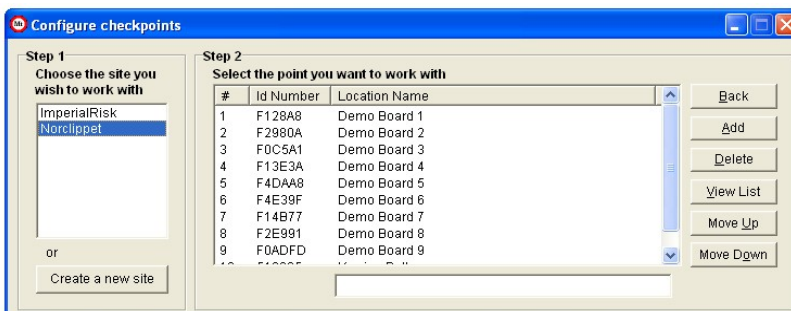
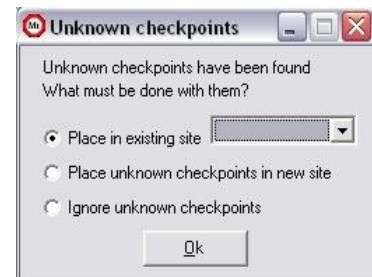


Mark down on a piece of paper the order of, and label each point as you clock them. They will appear in this order on your report.



Upload the data using the Ucomm3 docking station.

Once the new data has been uploaded, the MAG-TOUCH program will ask where to place *unknown checkpoints* (place in site or create a new site for them.)



Select the checkpoints tab on the MAG-TOUCH program. Select the site (Step 1), then the check point (Step 2) that needs to be edited. Rename the I.D. check points to the desired location name (edit box found under Step 2). Repeat until all points have been renamed.